

For Your Dental Practice

Analog meets Digital





**Wide product
range**



**Partner for
more than 60 years**



**Excellent
Support**

Content

Bond & Etch Fixing Materials	4–7	Digital Dentistry & IMPLA	14–17
Sebond Universal	4	Function in Implantology	14
Sebond Implant & Alphaslink Implant	5	Tizian JMA Optic by zebris Jaw Registration System	15
Alphaslink Cem	5	IMPLA	16
PrimeBond7	6	IMPLA Dialog	17
Composite Systems	7–11	Contact	18
NanoPaq	7		
Capo Natural & Capo Universal, Capo Flow	8		
Capo Slow Flow, Capo Bulk Fill	9		
Capo Bulk Fill Plus	10		
Composite product family at a glance	11		
Bleaching	12–13		
Bleach'n Smile Office Bleaching	12		
Bleach'n Smile Dental Dam	13		
Bleach'n Smile After Bleaching Care	13		



Dear Partners,

Trust and confidence – aren't these two terms becoming more and more important in today's ever changing world where products and markets are continuously gaining complexity? When we ask you to trust us – what would be the reason for you to do so?

Trust us because most of our products have been developed by our own R&D and are produced in Germany. Therefore, we know exactly how they function. Our technicians are working for you to answer your questions and provide the necessary daily support.

You can count on us because our expertise and support cover both worlds – digital and analog.

Rely on us because we can look back on more than 60 years experience in the market. This gives you the certainty that you will get the necessary parts and services for your implants or digital systems also in the future.

For many decades, customers around the globe have been trusting us, our products as well as our service.

Thank you for your confidence.

With compliments,

A stylized, handwritten signature in blue ink, consisting of a large 'A' followed by 'Zientz'.

Wolf Zientz
Managing Director





Bond & Etch Fixing Materials

Sebond Universal Primer

For restorations

Sebond Universal is a single-component universal primer for strong adhesive bonding between luting materials such as Alphasil Cem and indirect restorations made from lithium disilicate glass ceramic, zirconium dioxide, precious metals, non-precious metals, titanium, Zirconia reinforced composite, composites and PEEK. Its combination of three different methacrylates (silane methacrylate, phosphoric acid methacrylate and a sulfide methacrylate) ensures strong and longlasting adhesion to the restoration materials.

Your benefits:

- Universally applicable: Just one primer for almost all dental restoration materials
- Extremely economical: One thin film is enough
- Uniform reaction time of 60 seconds
- Easy to handle
- Long-lasting, secure adhesion
- Economic dispensing option
- Does not contain Bis-GMA, TEGDMA or HEMA
- No light polymerization required
- Low-viscosity material ensures efficient, rapid application
- Conveniently storable at room temperature (refrigeration not required)
- No additional equipment needed



art. no.	content
644093	Sebond Universal Primer 5 ml

Sebond Implant & Alphaslink Implant

For restorations

This system was specially developed for bonding titanium abutments to individualized zirconium dioxide abutments and supra-constructions. It fixes supra-constructions safely on individual abutments.

The full system consists of:

- **Sebond Implant:** The bonding agent prepares the zirconium dioxide surface for secure bonding.
- **Alphaslink Implant:** The fixing composite bonds your framework to the abutment.

Your benefits:

- Specially developed for bonding with a high level of safety
- The system adapts to the user
 - intraoral use = quick curing
 - use on a model = longer working range
- Excellent adhesion
- Long-term adhesion because of a specially adapted formula
- Precise, time-saving
- Because of the pasty consistency, superfluent material can easily be removed.

Bonds:

Zirconium dioxide, precious metals, non-precious metals, titanium, ceramics



art. no.	content
640076	Alphaslink Implant 8 g automix cartridge, 10 x mixing tips
640075	Sebond Implant 1 x 5 ml

E-module: 7.085 MPa Vickers hardness: 320 MPa
Bending strength: 107 MPa Compressive strength: 229 MPa

Alphaslink Cem

For natural teeth

Alphaslink Cem is a dual-curing fixing composite for natural teeth. It was specially developed for the adhesive fixation of indirect restorations such as veneers, inlays, onlays, crowns and bridges. The material bonds restorations made of glass ceramics, zirconium dioxide, composite, Zirconia reinforced composite, precious metals, non-precious metals and titanium. Alphaslink Cem is also suited to the adhesive fixation of root pins and for building up stumps (as core build up material).

Your benefits:

- Outstanding bonding values on dentin and ceramics
- Excellent radiopacity (210 % Al)
- Very high compressive strength of 290 MPa
- Abrasion-resistant
- High viscosity
- Automix cartridge for easy handling
- Transparent mixing tips
- High biocompatibility, as Bis-GMA-free
- Great physical properties ensure long-term stability
- Cures safely (self-curing)
- Available in two different colors, thus highly aesthetic



E-module: 12,039 MPa
Bending strength: 118 MPa
Very high Vickers hardness: 549 MPa
Compressive strength: 290 MPa

	ambient temperature ca. 21 °C (ca. 69 °F)	intraoral 37 °C (98.6 °F)
curing time incl. working range	ca. 6 min.	2–3 min.

art. no.	content
639012	A2 8 g automix cartridge
639014	semi-transparent 8 g automix cartridge
639015	Alphaslink Cem mixing cannulas, refill pack with 10 pieces

Pictures may vary from actual product.
All technical data are mean values and may vary slightly in each delivery batch.

SCHÜTZ DENTAL

PrimeBond7

For natural teeth



7. generation bonding - primer and bonder all in one

One material for many applications

The new PrimeBond7 is a self-etching, light-curing one-component bonding of the 7. generation. Bond filling composites safely and reliably to natural tooth structures in only one step. Quick and easy to handle with outstanding quality due to an optimally adapted formula – test it now!

Indications:

- Direct composite restorations on the natural tooth
- Indirect restorations made of composite or ceramics (inlays, onlays, veneers, crowns) with light-curing and dual-curing fixing composites
- Repair of fractured composite fillings

Your benefits:

- Outstanding bonding values
- Safe and reliable
- Quick and easy: etching, priming, bonding in only one step / can be applied evenly
- Permanent bond on enamel and dentin
- Extraordinary physical properties
- Good biocompatibility
- Gentle etching reduces the risk of hypersensitivities
- Compatible with conventional light-curing composite materials
- Choice between two techniques (self etch and selective etch)
- No refrigeration necessary

This is how it works:

- Primer and bonder in one: Only apply once, short polymerization time (ca. 10 sec.)
- No additional etching necessary
- Forms a homogenous adhesive layer to avoid "pooling"
- Stable material properties

Physical properties

	Mean value
Bond strength dentin (MPa)	26.0 MPa
Bond strength enamel (MPa)	24.0 MPa
pH-value	> 2

art. no.	content
232007	PrimeBond7



Composites

NanoPaq

NanoPaq is a light-curing nano composite for adhesive filling therapy with an ultrafine glass filler. Because of the ultrafine filler the results are very homogenous restorations. The specifically adjusted "chameleon effect" will help you obtain an optimal color adaptation of the filling. What's more, the fillings are easy to check because of the product's high radiopacity. All these facts make NanoPaq an excellent choice for your anterior and posterior restorations in all Black's classes.

Your benefits:

- Easy handling
- Outstanding physical properties
- Very high compressive strength of 432 MPa
- Superior abrasion resistance combined with being antagonist-friendly
- Brilliant colors and color stability (water absorption 15.6 µg/mm²)
- Extended working time
- Compatible with most etching and bonding systems
- Ideally suited to the minimally invasive filling technique
- Easy to polish



art. no.	color	4 g syringe
234500	Set (A2/A3/A3,5/A4)	
234510	A1	
234511	A2	
234512	A3	
234513	A3.5	
234514	A4	
234515	B1	
234516	B2	
234517	B3	
234530	OD A2	
234533	OD B2	
234540	IW	
234545	InTr	
234546	C2	
234547	IR	
234548	InU	
234550	InBl	
234552	D3	

Filler content: 83.5 % by weight
 E-module: 16,575 MPa
 Bending strength: 157 MPa

Vickers hardness: 948 MPa
 Compressive strength: 432 MPa

Pictures may vary from actual product.
 All technical data are mean values and may vary slightly in each delivery batch.

SCHÜTZ DENTAL

Capo Universal & Capo Natural

Capo Universal and Capo Natural are light-curing composites for the adhesive filling technique which are polishable to a high shine. They contain an ultra-fine, radiopaque glass filler. Thanks to this ultrafine glass filler, the resulting restorations are highly homogenous. A purposefully adapted "chameleon effect" ensures an excellent shade adjustment of the filling.

Your benefits:

- Superior abrasion resistance combined with being antagonist-friendly
- Brilliant colors and color stability
- Compatible with most etching and bonding systems
- Ideally suited to the minimally invasive filling technique
- Easy handling and easy to polish
- Outstanding physical properties

Filler content: 75 % by weight
 E-module: 11,173 MPa Vickers hardness: 784 MPa
 Bending strength: 157 MPa Compressive strength: 502 MPa

Source: Fraunhofer Institute for Ceramics Technologies and Systems IKTS, Dresden/Germany

art. no.	content
232054	Capo Universal 6 g syringe
232055	Capo Natural Set, 6 syringes (A2/A3/A3,5/B2/IM/Occ)

4 g syringe	color
232040	Capo Natural, A1
232041	Capo Natural, A2
232042	Capo Natural, A3
232043	Capo Natural, A3,5
232044	Capo Natural, A4
232049	Capo Natural, Incisal medium
232050	Capo Natural, Incisal clear
232051	Capo Natural, Incisal white
232052	Capo Natural, Bleach 1
232053	Capo Natural, Bleach 2
232045	Capo Natural, B2
232046	Capo Natural, B3
232047	Capo Natural, C2
232048	Capo Natural, C3

Capo Flow

Flowable micro-hybrid dental filling composite for cavity linings, for filling small defects and for fissure sealing.

Your benefits:

- Good physical properties
- Good polishability
- Easy to use
- No dripping

E-module: 6,998 MPa Vickers hardness: 374 MPa
 Bending strength: 134 MPa Compressive strength: 403 MPa

art. no.	content
234012	Capo Flow Set, 6 syringes (A2/A3/A3,5/A4/B3/C3)
234301	A1 Capo Flow 2 g syringe
234302	A2 Capo Flow 2 g syringe
234303	A3 Capo Flow 2 g syringe
234304	A3.5 Capo Flow 2 g syringe
234305	A4 Capo Flow 2 g syringe
234307	B2 Capo Flow 2 g syringe
234308	B3 Capo Flow 2 g syringe
234312	C3 Capo Flow 2 g syringe

Capo Slow Flow

Capo Slow Flow is a light-curing composite for sealing fissures and for fillings after cervical caries in anterior and posterior teeth. This composite combines the easy handling of a flowable composite with the extraordinary physical properties of a paste.

Your benefits:

- Biocompatible: 100 % free of Bis-GMA
- Extraordinary physical properties
- No additional layers necessary to cover the cavity = time-saving
- Excellent radiopacity (210 % Al), thus the filling can be easily controlled
- Compatible with most bonding and composite systems
- Chameleon effect = natural appearance
- Minimal shrinkage = very safe handling

art. no.	color	(2 g syringe)*
232061	A1	
232062	A2	
232063	A3	
232064	A3.5	
232065	B1	
232066	B2	
232067	B3	
232068	clear	

**incl. 10 application tips*

Filler content:	77 % by weight	Bending strength:	144 MPa
E-module:	12,316 MPa	Vickers hardness:	794 MPa
		Compressive strength:	431 MPa

Source: Fraunhofer Institute for Ceramics Technologies and Systems IKTS, Dresden/Germany

Capo Bulk Fill

Capo Bulk Fill is a light-curing posterior tooth composite for the direct filling therapy and for restorations using the Bulk Fill-technique. This simple and quick technique is suitable for layers with a thickness of up to 4 mm. The highly viscous material adapts very well to the bottom and walls of the cavity.

Your benefits:

- Quick and easy to work with, for a layer thickness of up to 4 mm
- Extraordinary physical properties
- Minimal shrinkage = very safe handling
- No additional layers necessary to cover class I cavities = time-saving
- Excellent radiopacity (210 % Al), thus the filling can be easily controlled
- Compatible with most bonding and composite systems
- Biocompatible: 100 % free of Bis-GMA, HEMA and TEGDMA
- Universal dentin color = natural appearance
- Easy to polish



E-module ¹ :	11,090 MPa
Bending strength ¹ :	134 MPa
Vickers hardness ¹ :	737 MPa
Compressive strength ¹ :	381 MPa
Radiopacity:	210 % Al
Filler content:	77 % by weight

¹Source: Fraunhofer Institute for Ceramics Technologies and Systems IKTS, Dresden/Germany

art. no. 2 g syringe*	color
232060	uni

**incl. 10 application tips*

Pictures may vary from actual product.
All technical data are mean values and may vary slightly in each delivery batch.

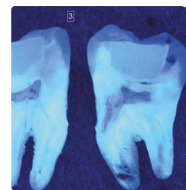
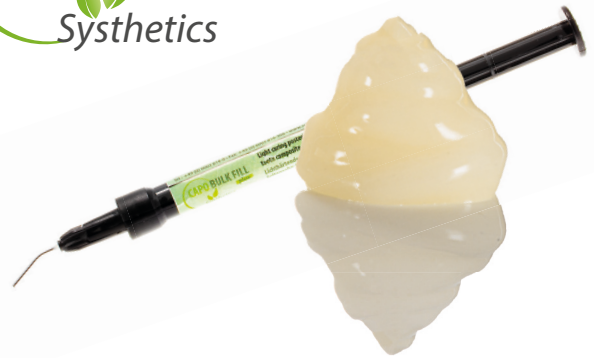
SCHÜTZ DENTAL

Capo Bulk Fill Plus

Capo Bulk Fill is a light-curing composite for posterior restorations in the direct filling technique and for the "Bulk Fill"-technique. This quick and easy method is suitable for layers with a thickness of up to 4 mm. The stable flow material adapts really well to the bottom and walls of the cavity.

Your benefits:

- No additional layers are necessary to cover class I cavities = time-saving
- Quick and easy processing with layer thicknesses of up to 4 mm
- Outstanding physical properties
- Minimal shrinkage provides = very safe application
- High radiopacity (210 % Al) ensures a dependable diagnosis between the filling material and the natural tooth substance
- Compatible with most bonding and composite systems
- Biocompatible: 100 % free of Bis-GMA, HEMA and TEGDMA
- Universal dentin color = natural appearance
- Easy to polish



Young's modulus¹: 11.090 MPa
 3-point-strength¹: 134 MPa
 Vickers hardness¹: 737 MPa
 Compressive strength¹: 381 MPa
 Radiopacity: 210 % Al
 Filler content: 77 % by weight

¹Source: Fraunhofer Institute for Ceramics Technologies and Systems IKTS, Dresden/Germany

art. no.	color	content
232059	uni	2 g syringe

Composite product family at a glance

Product	Use	Indication	Accessories
PrimeBond7	Natural teeth	<ul style="list-style-type: none"> • Direct composite restorations on the natural tooth • Indirect restorations made of composite or ceramics (inlays, onlays, veneers, crowns) with light-curing and dual-curing fixing composites • Repair of fractured composite fillings 	All Capo composites
Capo Bulk Fill (Plus)	Natural teeth	<ul style="list-style-type: none"> • Fillings with layer thicknesses to 4 mm in Black's class I cavities. • Base fillings/liners with layer thicknesses up to 4 mm in Black's class II cavities. For the following layers in a class II cavity, only use composites which are suited to filling Black's class II cavities. • Cavity lining – as a first (bottom) layer in Black's class I and II cavities 	All Capo composites + Nanopaq
Capo Flow Capo Slow Flow	Natural teeth	<ul style="list-style-type: none"> • Fissure sealing • Extended fissure sealing on molars and premolars • Fillings in Black's class V cavities (cervical caries, eroded areas in roots, wedge-shaped defects) • Minimally invasive fillings in Black's class I, II and III • Restoring defects in enamel • Blocking out undercuts • Minimal adjustments to the contours and shade of the enamel 	All Capo composites + Nanopaq
Capo Natural Capo Universal NanoPaq	Natural teeth	<ul style="list-style-type: none"> • Anterior and posterior restorations in Black's class I, II, III, IV, and V cavities. • Inlays, onlays and laminate veneers • Extended fissure sealing in molars and premolars • Stump build-up • Splinting loose teeth • Adjusting the contours and shades to improve aesthetics 	All Capo composites + Nanopaq

only
1
appointment

up to
10
shades

only
30
minutes*



Bleach'n Smile

Ask for the brochure
including step-by-step instructions!

Bleach'n Smile Office Bleaching

Indications:

- Medical tooth bleaching
- For labial surfaces
- Bleaching of devital teeth or teeth discolored by disease or injury
- Bleaching in endodontics

Your benefits:

- Ideal, stable consistency
- Easy and quick application with the automix system
- Fast in-depth effect (35 % hydrogen peroxide in mixed product)
- Gentle on natural teeth (pH-neutral)
- Neutral pH-value of 7.3
- Safe storage (no separation of the mixture, no formation of bubbles with the safety clip)
- Reliable in application



art. no.	content
237050	Bleach'n Smile Automix Set: bleaching gel and activator in a 4:1 automix cartridge (5 g cartridge) + 1x Dental Dam, 1.5 g + 1x After Bleaching Care Cream, 2 ml
237051	Refill Set: 5 x 5 g bleaching gel cartridges with 35 % hydrogen peroxide

Special formula with **potassium nitrate** and **sodium fluoride** helps avoiding sensitivities!

Pictures may vary from actual product.
For even better results up to 45 minutes.

Bleach'n Smile Dental Dam

Indication:

- Covering and protecting the gingiva

Your benefits:

- Good adhesion to the gingiva
- Only minor heat development
- Easy application
- Light-curing
- Sharp color contrast to the gingiva
- Takes less time than a rubber dam
- Excellent stability during application



art. no.

237020

content

4 x 1.5 g syringe

Bleach'n Smile After Bleaching Care

Indications:

- For the aftercare of teeth after in-office bleaching

Your benefits:

- Caries protection through xylitol
- Reduces sensitivities after bleaching
- Reduces hypersensitivities
- Very effective due to a very special formula



art. no.

237052

content

After Bleaching Care
5 x 2 ml syringe



Tradition

IMPLA meets zebris

Function in Implantology



Innovation

**Make an appointment with
our Specialists now:
+49 (0) 6003 814-365**

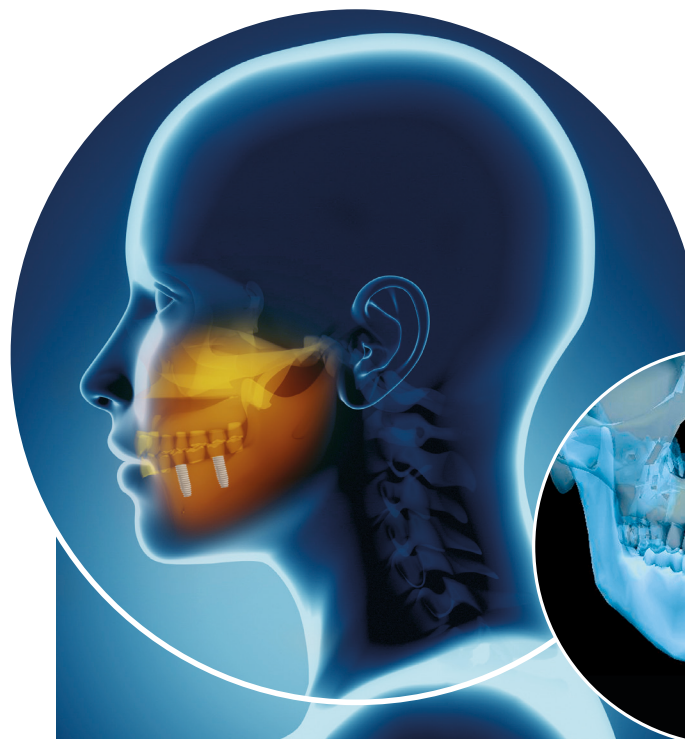
This combination is only available at Schütz Dental

**Safe implantology based upon the patient's real jaw movements.
For even safer implantology that is more profitable at the same time.**

Insert the implants in optimal relation to your patient's jaw movements and achieve an ideal occlusion. Amongst other factors, the service life of the implant significantly depends on the shear forces which affect the implant. With help of the Real Movement Data, the shear forces can be considered from the beginning.

Your benefits

- Even more safety
- More precise, predictable results
- Additional billing options
- Patients' trust
- Digital image





Tizian JMA Optic by zebris
For safe prosthetics

The new dimension of the function-oriented digital workflow

Welcome to the world of functional digital dentistry

Precise, safe, quick and economic! The Tizian JMA Optic system is based upon the latest optical sensor technology. A new dimension in functional dentistry.

Make an appointment now!

Make an appointment for a demo now.

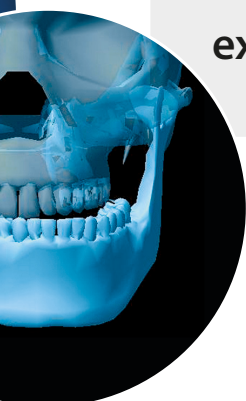
Or register for a zebris training course.

+49 (0) 6003 814-365
export@schuetz-dental.de



Your benefits:

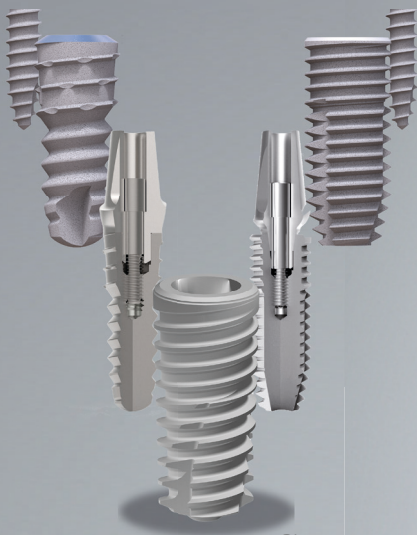
- Reliable prosthetics
- Forensic transparency
- Documentation
- Happy patients
- Digital image for your practice
- Decisive competitive advantage



Made in Germany.

Clinical experience since 1963.

*Tested safety and top quality
at a fair price.*



Pictures may vary from actual product.



Since 1963

IMPLA Micro Retention, IMPLA Cylindrical, IMPLA Dialog and IMPLA Mini

The proper implant for nearly every case.

A good implant system must not be complicated. With over 60 years of experience in dental implantology, the IMPLA system stands for safety and reliability.

The sophisticated system allows you to treat almost every indication while at the same time remaining manageable. Continuous development ensures the highest quality. The global network of consultants with renowned interna-

tional DGZI speakers offers you the opportunity to attend a wide range of top class training courses. These courses are available both nationally and internationally.

Your benefits

- Expert knowledge & safety since 1963
- Outstanding surface purity
- Made in Germany
- We have a solution for partially every case

**Make an appointment with
your IMPLA Specialist now:
+49 (0) 6003 814-365**



**Watch our
image video**



Welcome to the family: IMPLA Dialog

The Dialog implant is a great addition to our IMPLA system.

It has been a pleasure for all of us in the sales and development team to be part of this product inventing process. Dialog helps to achieve great results in soft bone.

For example, you can now plan immediate implant placement with improved primary stability thanks to the new shape and thread arrangement. This makes working with our implant even more intuitive and safe. Please find an overview of the new implant features below:

- **Quality made in Germany**
- **One-stage and two-stage submersible system**
- **11° conical connection with internal hexagon for repositioning the restoration**
- **Precise interface, stable connection**
- **Implant apex: design allowing easier penetration**
- **Can be used with the well-known IMPLA prosthetics (Cone Connection)**
- **3° body taper offers excellent primary stability
and keeps the implant stable in cases with soft bone**



We are glad to be there for
you



+49 (0) 6003 814-365



export@schuetz-dental.de



www.schuetz-dental.com

Schütz Dental newsletter

Register now and always stay one step ahead.

Benefit from exclusive offers and promotions with our newsletters on the topics of dental technology, dentistry and implantology. Never miss important information or events from Schütz Dental again.

Register right now at: sdent.eu/newd

Onlineshop

Quick and easy to order online.

Order around the clock, whenever and wherever you want. Conveniently via our Schütz Dental online store. Register now and order directly, easily and quickly online.

www.schuetz-dental.com

Visit us online!

All information without guarantee. Errors, changes and prior sale reserved.
The details shown are examples, we will be happy to make you a concrete offer.



Schütz Dental GmbH • Dieselstr. 5-6 • 61191 Rosbach/Germany • Tel. +49 (0) 6003 814-0 • Fax +49 (0) 6003 814-906
www.schuetz-dental.de • info@schuetz-dental.de