

Dental Technology



Content

Schütz Dental – More than just products	4	Consumables	12
Tizian CAD	6	CoCr Alloys	12
Scanners	6		
CAD Modelling Software	6	Our Top Sellers for Dentists	13
Milling Systems	7	Other products	14
Tizian Cut Milling Machines	7	zebris-JAnalyser ⁺ System	14
		IMPLA	14
Ceramic Systems	8	Newsletter	15
Bonding Systems	9	Contact	16
Composites	10		
Denture Acrylics	11		



Dear Partners,

trust and confidence – aren't these two terms becoming more and more important in today's ever changing world where products and markets are continuously gaining complexity. When we ask you to trust us – what would be the reason for you to do so.

Trust us because most of our products have been developed by our own R&D and produced in Germany. Therefore, we know exactly how they function. Our technicians are working for you to answer your questions and provide the necessary daily support.

You can count on us because our expertise and support cover both worlds – digital and analogue.

Rely on us because we can look back on more than 50 years experience in the market. This gives you the certainty that you will get the necessary parts and services for your implants or digital systems also in the future.

For many decades customers around the globe have been trusting us, our products as well as our service.

Thank you for your confidence.

With compliments,

Wolf Zientz
Managing Director





Schütz Dental – More than just products

Complete Digital Workflow – all this from Schütz Dental

The coordination of zebris (jaw joint measurement), IMPLA 3D (implant navigation software), CT systems and intraoral cameras with the Tizian CAD/CAM system brings you many benefits.

In this combination, it is only available from Schütz Dental.

Complete Digital Workflow - for you this means:

- higher level of safety
- open interfaces
- work more efficiently
- higher precision
- independence
- image benefits

Professional training courses as a key competitive advantage

The world of dental technology, dentistry and implantology develops faster than ever before. Use Schütz Dental's top quality training courses to stay one step ahead of your competitors.

Schütz Dental offers individual trainings at your lab, at a location near you or via convenient online courses. Let us share our experience with you. Benefit from individual courses for you and your team with custo-

mized contents. Specialists in CAD/CAM technology, implantology, jaw joint measurement and many other subjects will demonstrate our systems live for you.

Participate in international progress, exchange opinions with our top level international partners and speakers - we offer training courses for both beginners and advanced users.



Our service does not stop with the sale

„Your success is our passion.“ - we take this slogan very seriously. Our experts, whether they are dental technicians, service technicians or marketing specialists, are at your disposal for any questions that you may have. Benefit from our individual solutions for your practice or for your lab.

Our online support team will assist you on demand: If you have any questions concerning your system, our

experts can connect directly to your equipment and give you the necessary support. You can resume your work quickly and do not lose time.

Our customer service hotline will attend to your questions: Just call and consult one of our experts.

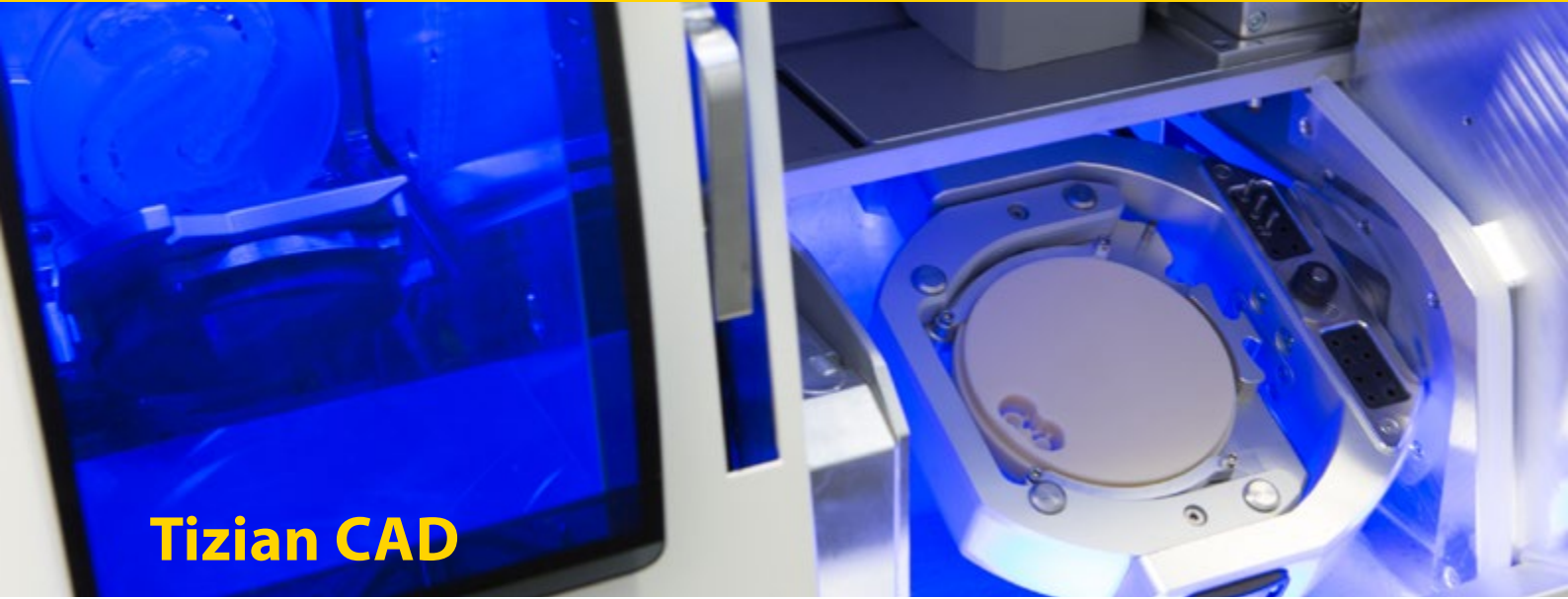
Use our webinars and training courses via internet to stay up-to-date without having to travel.

We do research for you

By virtue of a large research and development department, we can offer you the latest developments at an early stage and thus give you an advantage over your competitors.

Quality „made in Germany“

We only supply products tested in accordance with the latest industrial standards. This gives you the confidence that you are using only high quality consumables and equipment to produce your high quality restorations.



Tizian CAD

Tizian CAD/CAM offers you an open system of the latest generation, based on a modular design. With all components from the same source you receive a high level of safety. We supply you with everything you need for a future-proof CAD/CAM system: products ranging from blanks and mills to CAD software.



Tizian Scanners

Tizian Smart-Scan plus

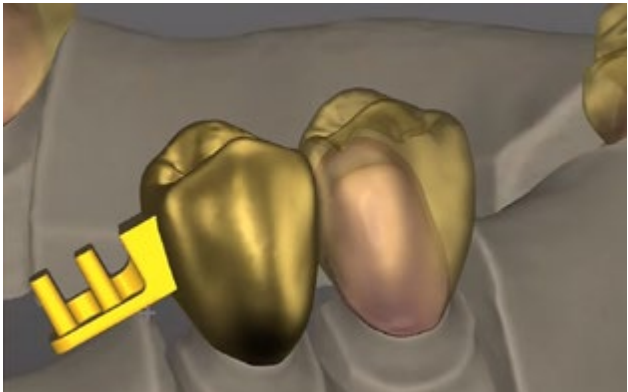
Scan models made from many different materials with this dental scan system and obtain high-resolution, open STL-files.

The system scans your models with highly precise stripe light scanning. This technology lets you scan nearly all standard dental materials in detail, even without the use of a scan spray.

CAD Modelling Software

Tizian Creativ RT

Tizian Creativ RT is a CAD software that was developed for the special requirements of dental technology. The modular design lets you tailor your software precisely to your needs. And with the continuous further development of the Tizian Creativ RT software you have all the competitive advantages - now and in the future.

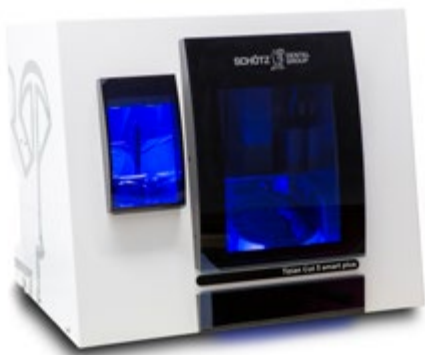


Milling systems

Tizian Cut milling systems

Tizian Cut 5 smart

From individual crowns to large implant-supported constructions: Depend on this 5-axis system to mill your restorations. With its high-quality components, Tizian Cut 5 smart will even mill CoCr. A liquid cooling system is available optionally to mill lithium disilicate with this machine. Another optional feature of Tizian Cut 5 smart is the 8-fold blank changer.



Tizian Cut 5 smart plus

Tizian Cut 5.2

Mill almost any dental restoration with this 5-axis milling machine. Its special and premium quality construction lets you mill zirconium dioxide, CoCr, titanium and almost all other materials offered for dental technology. Optional wet grinding for lithium disilicate. Another optional feature is the 12-fold blank changer.



Tizian Cut 5.2 plus

Tizian Cut 5 Dry

Tizian Cut 5 Dry is a 5-axis machine for dry milling with an especially wide range of indications. The B-axis impresses with its exceptionally wide rotating angle of up to ± 35 degrees and with a blank holder for blanks with a height of up to 40 mm. These and other great features of the machine help guarantee that it can produce nearly all types of dry-milled restorations. The particularly robust construction ensures excellent machining results. Numerous convenience features such as an automatic tool changer and the useful accessory drawer will make milling with Tizian Cut 5 Dry quick and efficient. The machine is very pleasant to work with due to its extreme user-friendliness.



Tizian Cut 5 Dry

Ask for our special brochure for Tizian Milling Machines now or contact your local dealer.

Ceramic Systems

No matter if you need low-fusing or high-fusing ceramics. With Tizian, Nuance 750 and Nuance 850 we offer you the best choice to veneer most materials. All our ceramic materials feature a very high firing stability. This stability ensures that you will obtain the desired tooth color after the correction firings.

Tizian Ceramics

Veneer your dental restorations made of zirconium dioxide and titanium with this ceramic system. The results will inspire you and your customers.

CTE values of compatible framework materials

Tizian Ti $9,6 \times 10^{-6} \text{ K}^{-1}$

Tizian ZrO₂ $10,4 \times 10^{-6} \text{ K}^{-1}$

Tizian Ti Ceramics 9-color Set

Titanium + zirconium dioxide

art. no. 624920

Titanium

art. no. 624921

Zirconium dioxide

art. no. 624922



Nuance 750 Master-Set 624596

Nuance 850

Veneering ceramics for high-fusing dental alloys. With the 8-color set, you will produce dental restorations that appear very lifelike.

CTE values of compatible framework materials

Nuance 850 $13.8 - 15.0 \times 10^{-6} \text{ K}^{-1}$

Nuance 750

Veneering ceramics for low-fusing dental alloys. In addition, you can veneer frameworks made from Nuance 750 pressing pellets with the 8-color set.

CTE values of compatible framework materials

Nuance 750 $15.9 - 16.8 \times 10^{-6} \text{ K}^{-1}$

Nuance 750/850 color Set

The stain set for your Nuance 750/850 ceramic veneers. An excellent color matching helps you obtain even more brilliance for your restorations.



art. no. 624295

Bonding Systems

www.schuetz-dental.com

Visit us online.



art. no. 640066



art. no. 640068

Sebond Smart Metal Bonder

The metal bonder for a safe bond between resin or composite and metal. This primer can be used universally on all conventional metals and with all conventional composite systems.

Sebond Smart Zr

The metal bonder for a secure bond between zirconium dioxide and composite. The chemical retention for composite veneers on zirconium dioxide.

Sebond Bondopaker Dentin

Apply opaquer and metal bonder in only one work step. Use this bond opaquer for covering clasps and retentions.



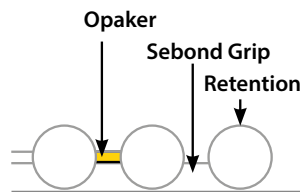
art. no. 644094–644099



light art. no. 644090
dark art. no. 644091



art. no. 644092



Sebond Grip

A universal grounding opaquer. This additional mechanical bond for resin veneers offers you an even higher level of safety.

Sebond Implant and Alphaslink Implant

This bonding and adhesive system safely bonds zirconium dioxide frameworks to titanium bases. Easy handling and excellent bonding values leave hardly anything to be desired.

art. no. 640075



art. no. 640076

Composites

dialog Vario

Veneer crowns and bridges with a flowable or a paste composite. With dialog Vario, you have got the choice. The easy handling and the excellent aesthetic results will inspire you.



art. no. 643401



art. no. 643410

dialog Vario Chroma Flow Set

Light-curing composite colors for the individualization of dental restorations made of composite. Paint the surfaces of your restorations or add the colors between the layers.

dialog Occlusal Six-Color Set

Light-curing crown and bridge composite for the creation of occlusal veneers, palatal surfaces, cusps and full veneers. Well-suited for the production of bionic restorations.



art. no. 643610

Denture Acrylics



Injection Technique

- FuturaGen
- FuturaJet
- FuturAcryl 2000



Repairs

- FuturaGen
- FuturaJet
- FuturaPress N
- FuturaPress LT
- FuturaSelf
- Futura Basic Cold



Completion of Frameworks

- FuturaGen
- FuturaJet
- FuturaPress N
- FuturaPress LT
- FuturaSelf
- Futura Basic Cold



Full Dentures

- FuturaGen
- FuturaJet
- Futura Basic Cold
- Futura Basic Hot
- FuturAcryl 2000



Relinings

- FuturaGen
- FuturaJet
- FuturaPress N
- FuturaPress LT
- FuturaSelf
- Futura Basic Cold



Flask Technique

- FuturAcryl 2000
- Futura Basic Hot

All products of our Futura-Series consist of a powder and a liquid.



1



2

FuturaGen 1

Outstanding auto-curing denture acrylic. Produces extremely well-fitting dentures due to its minimal shrinkage.



3



4

FuturaJet 2

The multi-talent amongst the cold-curing acrylics. It covers almost all indications, e.g. the flow technique and the injection technique.

FuturaPress LT and FuturaPress N 3

Auto-curing denture acrylic that has been used successfully in dental labs for decades. The difference between the two acrylics is the working time.

Futura Basic Cold 4

This cold-curing acrylic offers you an extremely good price-performance-ratio while guaranteeing high quality.



5



6

Futura Basic Hot 5

This heat-curing acrylic also offers you an extremely good price-performance-ratio while providing high quality.

FuturAcryl 2000 6

Heat-curing denture acrylic with extraordinary physical properties.

Consumables

PaintAcryl Set Modelling Acrylic

Cold-curing modelling acrylic to create e.g. telescopic crowns and supra-constructions. This acrylic burns out completely and is easy to handle.

art. no. 629310



Profit Set Fixing Material

Cyano-acrylate based glue for highest precision. For fixing attachments, connecting crowns and producing soldering bases. Separate activator to activate the material after application.

art. no. 629520



AlphaDie MF

Polyurethane-based die material for the production of highly precise tooth rims for saw-cut dies and master models.

ivory
art. no. 621210
apricot
art. no. 621215



CoCr Alloys

Microlit isi non-precious ceramic alloy

CoCr-based, biocompatible non-precious ceramic alloy.

CTE $14.1 \times 10^{-6} \text{ K}^{-1}$

Vickers hardness HV 10: 280



Ask for the special brochure of our wide range of high-precious alloys and gold mills.

Micronium N 10

CoCrMo-based alloy for frameworks. Thanks to its excellent E-module, the alloy is especially well suited to the production of clasp-fixed frameworks.



Micronium Exclusiv

CoCrMo-based alloy for frameworks. Thanks to its extreme hardness, the alloy is especially well suited to the production of supraconstructions.

**Schütz Dental
products for
your dentist.**



Pass the word...

Our Top Sellers for dentists

Silk Files



Endodontic rotary files that combine flexibility and stiffness. The teardrop shaped cross-section reduces the screwing effect.

Surgical Sutures



MANI sutures provide maximum sharpness and precision. The products are break-resistant and flexible at the same time which makes them especially safe to work with.

Bleach'n Smile Automix Set



Outstanding in-office bleaching gel with a quick in-depth effect. What's more, its neutral pH-value is very gentle on natural teeth.

Capo Bulk Fill Compules



A light-curing posterior tooth composite for the direct filling therapy and for restorations using the Bulk Fill technique. Adapts very well to the bottom and walls of the cavity.

NanoPaq



Light-curing nano composite for the adhesive filling therapy with an ultrafine glass filler. An excellent choice for minimally invasive techniques.

IMPLA



The IMPLA line offers the proper implant for nearly every case. IMPLA 3D Navigation is an outstanding tool for diagnostics and for planning surgeries. Clinical experience since 1963.

SCHÜTZ DENTAL

Other products

zebris-JMAnalyzer⁺

Jaw joint measuring system

Indications:

- jaw joint registration
- records all six degrees of the lower jaw's mobility
- determination of maxilla relations

Your advantages:

- additional income (private health care)
- fewer corrections in the occlusal area
- legally defensible
- provides flexibility through mobility
- easy, quick and precise
- the system is future-proof as part of the „Complete Digital Workflow“



Ask for our special brochure now!



IMPLA

IMPLA

Indications:

The IMPLA implant system is suited to nearly all indications in modern implantology.

Your advantages:

- over 50 years of clinical experience ensure safety
- cost-efficient - insert eight different implant lines with just one surgery kit
- the micro-structured, highly pure surface (etched and sand-blasted) promotes an excellent osseointegration
- highly precise connection between implant and abutment
- with IMPLA 3D, the system is part of the „Complete Digital Workflow“



Schütz Dental Newsletter

Register for our newsletter and be one step ahead.

Benefit from exclusive offers and promotions for dental technology, dentistry and implantology which are only available through our newsletter. Never miss important information or events by Schütz Dental again. Always keep one decisive step ahead of your competitors.

**Register now at:
sdent.eu/newsletterenglish**



Contact us

We are here for you:

Telephone	+49 (0) 6003 814-365
Fax	+49 (0) 6003 814-907
E-mail	export@schuetz-dental.de

Visit us online now

www.schuetz-dental.com



Schütz Dental GmbH • Dieselstr. 5-6 • 61191 Rosbach/Germany • Tel. +49 (0) 6003 814-365 • Fax +49 (0) 6003 814-907
www.schuetz-dental.com • export@schuetz-dental.de